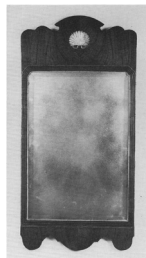


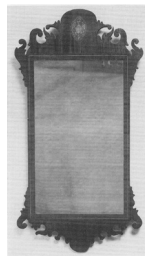
546



252



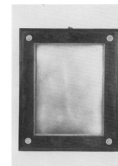
743



775



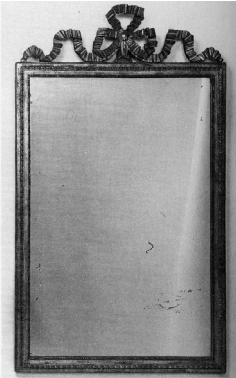
187



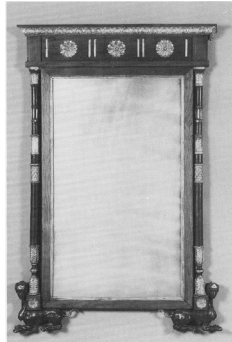
807



375



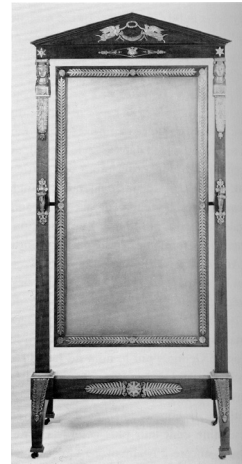
384



641



353



401



51

### *World Mirrors*

2011

série d'impressions UV sur aluminium brossé

dimensions variables

pièces uniques (+1 AP)

546 Venise, v. 1700 (121 x 98,4 cm)

252 Georges III, v. 1810 (147,8 x 97 cm)

743 « Reine Anne », v. 1735 (110,5 x 61,3 cm)

775 Fédéral, peut-être New York, v. 1805 (108,5 x 60,6 cm)

187 Georges III, v. 1765 (88 x 53,6 cm)

807 Fédéral, v. 1825 (71 x 48,2 cm)

375 Louis XV, v. 1750-1760 (123,6 x 84 cm)

384 Louis XVI, v. 1780 (164 x 104,5 cm)

641 Italie du Nord, peut-être Piémont, v. 1820 (148,5 x 98,7 cm)

353 Louis XV, v. 1740 (175,5 x 115,8 cm)

401 Empire, v. 1810 (201 x 105 cm)

51 Georges Ier, 1725 (172 x 95 cm)